

SHEET TITLE	
THE GARAGES ADDITION AN ADDITION TO THE CITY OF HASTINGS LOCATED IN THE NW1/4 SECTION 16 AND THE NE1/4 SECTION 17, T7N, R9W ADAMS COUNTY, NEBRASKA	
DATE	6/30/06
SCALE	1"=100'
DRAWN BY	JM
PROJECT NO.	3305/2288
FIELD BOOK	ADAMS/CH90
FIELD CHECK	JMMS
DATE	6/30/06
DESIGNER	JMMS
DATE	6/30/06
PROJECT	2

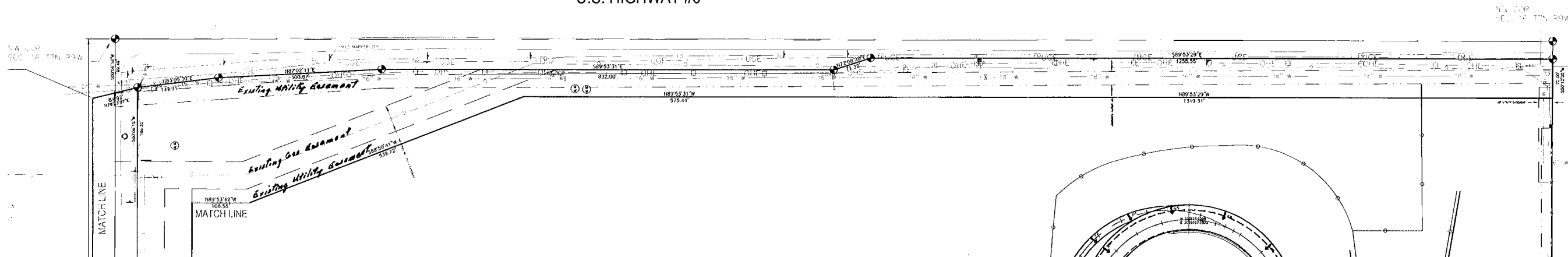


Ph: 402.462.565 * 5210 West Highway 6 Hastings, Nebraska 68901

THE GARAGES ADDITION

AN ADDITION TO THE CITY OF HASTINGS LOCATED IN THE NW 1/4 SECTION 16 AND THE NE1/4 SECTION 17, T7N, R9W, ADAMS COUNTY, NEBRASKA

U.S. HIGHWAY #6



LEGAL DESCRIPTION

A tract of land located in the Northwest Quarter (NW1/4) Section 16 and the Northeast Quarter (NE1/4) Section 17, Township 7 North, Range 9 West of the Sixth P.M., Adams County, Nebraska, more particularly described as follows: Commencing at the Northwest Corner said Northwest Quarter (NW1/4) thence S00°06'18\"/>

CORNER TIES (HORIZ. DIST.)

NW CORNER SECTION 16-T7N-R9W
Found Aluminum Cop in Asphalt
NE 78.95' Nail & Shiner in PP
SE 76.57' Nail & Shiner in PP
SW 69.11' Red Head in PP
NW 70.14' "X" Nails in PP

NE 1/4 CORNER SECTION 16-T7N-R9W

Found Aluminum Cop in Asphalt
NE 50.00' 5/8\"/>

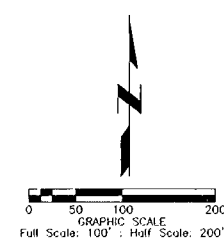
NE 1/4 CORNER SECTION 16-T7N-R9W

Found Aluminum Cop in Asphalt
NNE 106.91' Nail & Shiner in Tele Riser Post
NE 48.82' Nail in top Guard Rail Post
S 48.30' Nail in Guy Pole
SSE 44.41' "X" Nails in C/P
NW 162.00' "X" Nails in PP

PRELIMINARY/FINAL PLAT

THE GARAGES ADDITION
AN ADDITION TO THE CITY OF HASTINGS
LOCATED IN THE NW1/4 SECTION 16,
AND THE NE1/4 SECTION 17,
T7N, R9W, ADAMS COUNTY, NEBRASKA

JEO
Consulting Group, Inc.
Hastings, Nebraska 68401
Ph: 402-462-2667
Fax: 402-462-2667



434