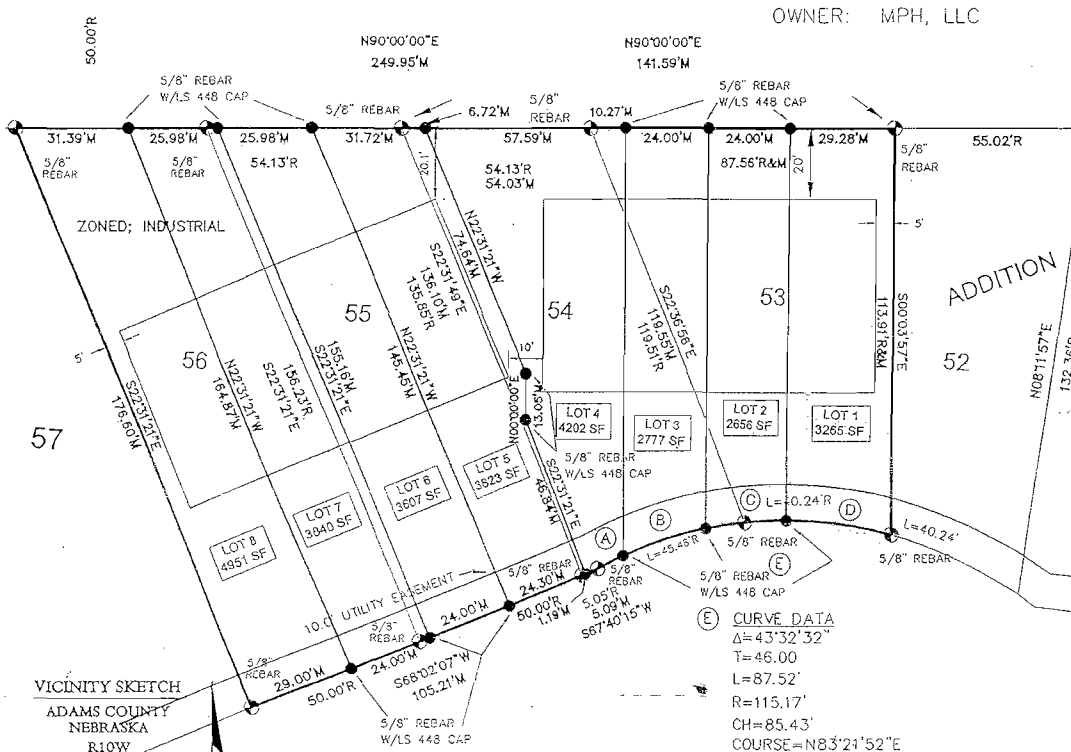
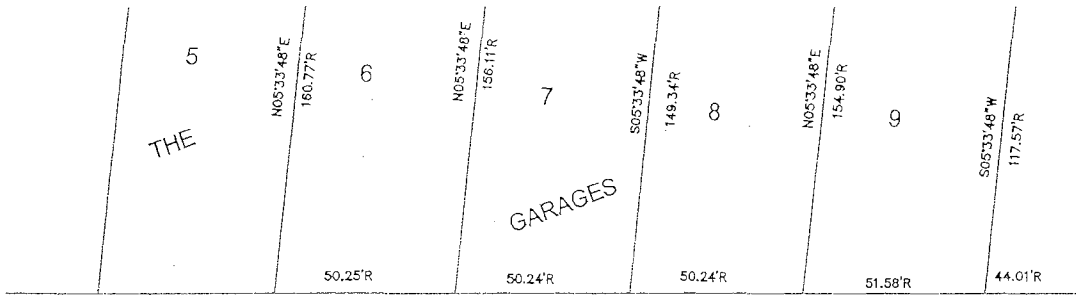
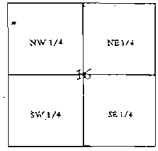


THE GARAGES FOURTH SUBDIVISION ADMINISTRATIVE PLAT

A REPLAT OF LOTS 53, 54, 55 AND 56, THE GARAGES ADDITION TO THE CITY OF HASTINGS,
ADAMS COUNTY, NEBRASKA



VICINITY SKETCH
ADAMS COUNTY
NEBRASKA
R10W



LEGAL DESCRIPTION

Lots 53, 54, 55, and 56, The Garages Addition to the City of Hastings, Adams County, Nebraska hereinafter known as The Garages Fourth Addition.

- (A) CURVE DATA**
 $\Delta = 4^{\circ}08'05''$
 $T = 4.16'$
 $L = 8.31'$
 $R = 115.17'$
 $CH = 8.31'$
 $COURSE = N63^{\circ}39'38''E$
- (B) CURVE DATA**
 $\Delta = 12^{\circ}34'42''$
 $T = 12.69'$
 $L = 25.28'$
 $R = 115.17'$
 $CH = 25.23'$
 $COURSE = N72^{\circ}01'02''E$
- (C) CURVE DATA**
 $\Delta = 12^{\circ}01'15''$
 $T = 12.13'$
 $L = 24.16'$
 $R = 115.17'$
 $CH = 24.12'$
 $COURSE = N64^{\circ}19'00''E$
- (D) CURVE DATA**
 $\Delta = 14^{\circ}48'51''$
 $T = 14.97'$
 $L = 29.77'$
 $R = 115.17'$
 $CH = 29.66'$
 $COURSE = S62^{\circ}16'07''E$

NOTE: ALL BEARINGS ARE ASSUMED.

LEGEND

- MONUMENT FOUND
- MONUMENT SET
- TEMPORARY POINT
- D DEEDED DISTANCE
- G GOVERNMENT DISTANCE
- M MEASURED DISTANCE
- P PLATTED DISTANCE
- R RECORDED DISTANCE

DATE
7/17/09

SCALE
1"=40'

DRAWN
JM

JOB NO.
330SU414

FIELD BOOK
HASTINGS #41

FIELD WORK
JG, TK

SHEET 1 OF 2

FILE NO.
330SU414-1.DWG



Corporate Office
402.443.4661
PO Box 267
Wahoo, Nebraska 68066

Branch Offices
Hastings, Nebraska
402.462.5657

Lincoln, Nebraska
402.435.3880

Nebraska City, Nebraska
402.873.5766

Norfolk, Nebraska
402.371.6416

Carroll, Iowa
712.792.9711

New Richmond, Wisconsin
715.246.4319

www.jeo.com

SURVEYOR'S CERTIFICATE:

I HEREBY CERTIFY THAT THIS PLAT OF A SURVEY WAS MADE BY ME OR UNDER MY SUPERVISION AND IS TRUE AND ACCURATE TO THE BEST OF MY KNOWLEDGE, AND THAT I AM A DULY REGISTERED LAND SURVEYOR UNDER THE LAWS OF THE STATE OF NEBRASKA.

THOMAS L. KRUEGER, LS 448