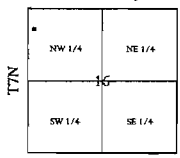
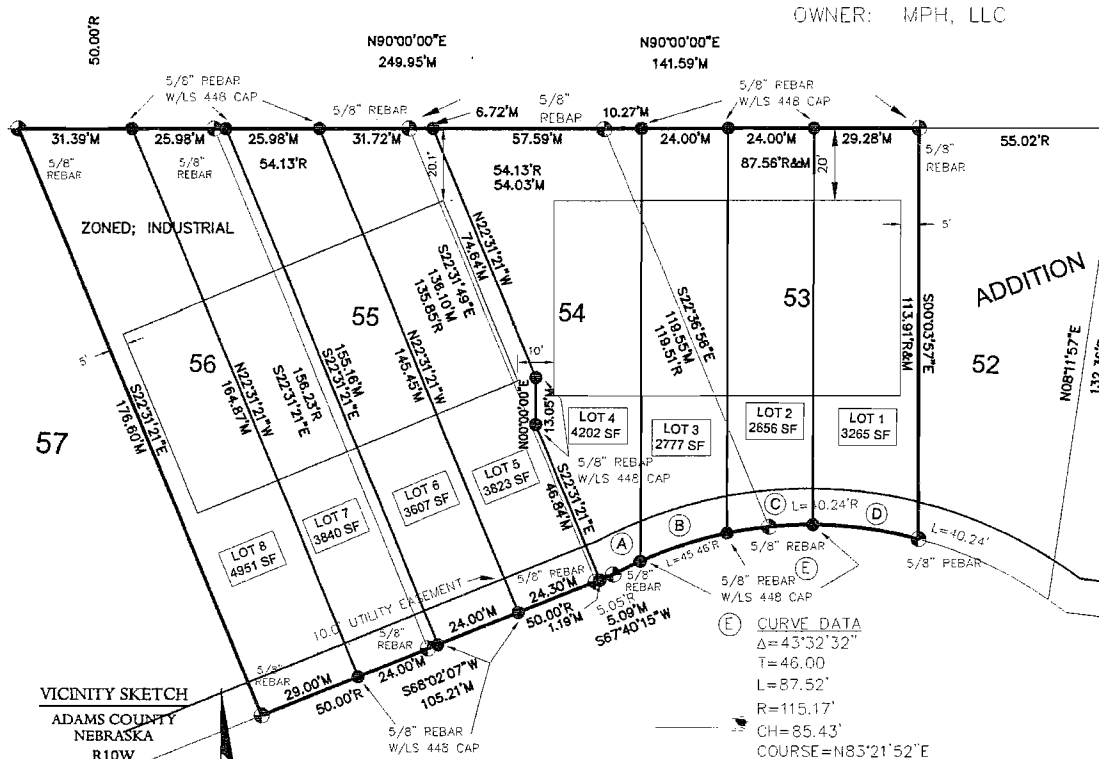
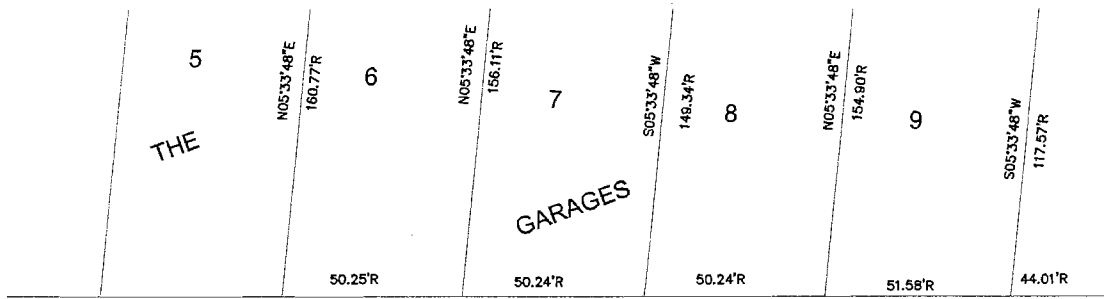


# THE GARAGES FOURTH SUBDIVISION

## ADMINISTRATIVE PLAT

A REPLAT OF LOTS 53, 54, 55 AND 56, THE GARAGES ADDITION TO THE CITY OF HASTINGS, ADAMS COUNTY, NEBRASKA



### LEGAL DESCRIPTION

Lots 53, 54, 55, and 56, The Garages Addition to the City of Hastings, Adams County, Nebraska hereinafter known as The Garages Fourth Addition.

- (A) CURVE DATA  
Δ=4°08'05"  
T=4.16  
L=8.31'  
R=115.17'  
CH=8.31'  
COURSE=N63°39'38"E
- (B) CURVE DATA  
Δ=12°34'42"  
T=12.69  
L=25.28'  
R=115.17'  
CH=25.23'  
COURSE=N72°01'02"E
- (C) CURVE DATA  
Δ=12°01'15"  
T=12.13  
L=24.16'  
R=115.17'  
CH=24.12'  
COURSE=N84°19'00"E
- (D) CURVE DATA  
Δ=14°48'31"  
T=14.97  
L=29.77'  
R=115.17'  
CH=29.68'  
COURSE=S82°16'07"E

NOTE: ALL BEARINGS ARE ASSUMED.

- LEGEND**
- MONUMENT FOUND
  - TEMPORARY POINT
  - D DEEDED DISTANCE
  - G GOVERNMENT DISTANCE
  - M MEASURED DISTANCE
  - P PLATTED DISTANCE
  - R RECORDED DISTANCE

**JEO**  
Consulting Group, Inc.

**Corporate Office**  
402.443.4661  
PO Box 207  
Wahoo, Nebraska 68066

**Branch Offices**  
Hastings, Nebraska  
402.462.5657  
Lincoln, Nebraska  
402.453.3080  
Nebraska City, Nebraska  
402.873.6766  
Norfolk, Nebraska  
402.371.6416  
Carroll, Iowa  
712.792.9711  
New Richmond, Wisconsin  
715.246.4319  
www.jeo.com

### SURVEYOR'S CERTIFICATE:

I HEREBY CERTIFY THAT THIS PLAT OF A SURVEY WAS MADE BY ME OR UNDER MY SUPERVISION AND IS TRUE AND ACCURATE TO THE BEST OF MY KNOWLEDGE, AND THAT I AM A DULY REGISTERED LAND SURVEYOR UNDER THE LAWS OF THE STATE OF NEBRASKA.

THOMAS L. KRUEGER, LS 448

DATE	7/17/09
SCALE	1"=40'
DRAWN	JM
JOB NO.	330SU414
FIELD BOOK	HASTINGS #41
FIELD WORK	JG, TK
SHEET	1 OF 2
FILE NO.	330SU414-1.DWG